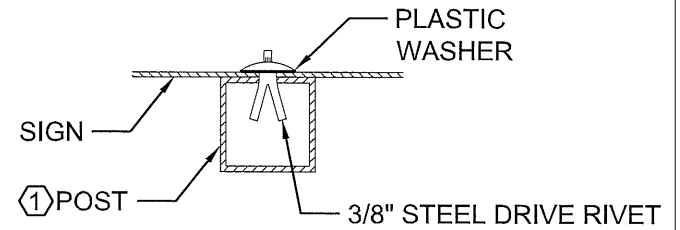
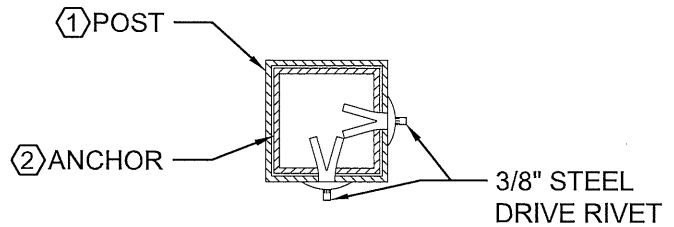


**SIGN MOUNTING**



**SIGN MOUNTING W/WASHER**



**ANCHOR ASSEMBLY**

**LEGEND**

- ① Post - 1-3/4" x 1-3/4" Square Perforated 0.105" Galvanized Steel Tubing
- ② Anchor - 2" x 2" x 30", Square Perforated 0.105" Galvanized Steel Tubing

**NOTES:**

- 1. MOUNTING WITH WASHER REQUIRED WHEN SIGN THICKNESS IS 0.08"



**STREET SIGN INSTALLATION**

APPROVED BY:

*Walter S. [Signature]*  
 COUNTY ENGINEER

8-18-2015  
 DATE

STANDARD PLAN

**R-16**

SHEET 1 OF 1